

[®] **W** arvind
varuna
associates

architecture &
interior design

+919841011226

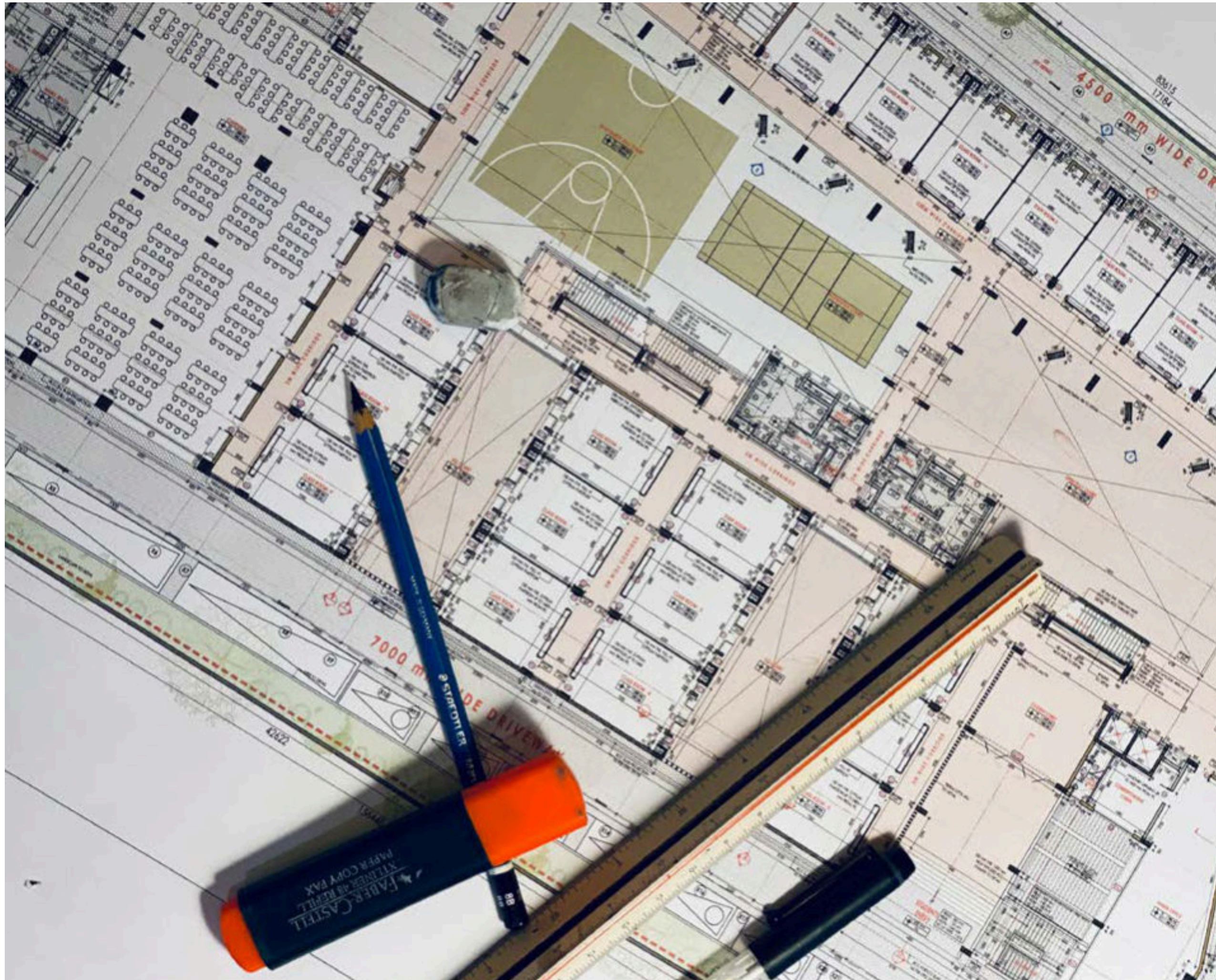
[instagram](#) • [facebook](#)



table of contents

about	1	projects — institutional	15	projects — hospitality	31
the firm	1	vidyagyan, a residential school	15	ciclo, a cycle cafe	31
design philosophy	2	international school	17	business hotel, london	33
principals	3				
services	4	projects — homes	19	contact us	37
architecture	4	tropical home	19		
interior design	5	villa in an urban context	22		
engineering services	6	weekend getaway	24		
curation and styling	7	private villa	26		
furniture	8				
projects — commercial	9	projects — housing	29		
IT campus	9	pushkar II, apartment tower	29		
office tower - pallavaram, chennai	11				
co-working spaces	13				





the firm

Arvind Varuna Associates was established in 2004. Prior to its founding, its principals were in a partnership firm (Ms. Kumar Arvind Varuna), which had been active since 1994. Since then, they've worked to build their own practice bit-by-bit, day-by-day. Today, AVA is a well-established player, with a mid-sized team of about 30 members.

Their work covers a wide range of architecture and interior design projects. These include several residences, housing, commercial cum IT projects, restaurants, hotels and schools. Many of AVA's works have received recognition and felicitation in the form of coverage and awards from contemporary architectural publications.



design philosophy

The firm keeps the design process simple, placing emphasis on the context of the site and its environment above all else. The climate of the region and the availability of local craftsmen, labor and materials serve as the starting point for all of our projects.

The use of modern concepts and techniques, coupled with traditional practices lead to design solutions that are practical, functional and aesthetically pleasing.

A holistic design approach which covers all aspects including architecture, interior design, furniture design, concepts of landscape design, and engineering services to make the project successful and comprehensive from the start.

The needs and interests of the client are always paramount. This reflects in the firm's approach to any project, as the fundamental goal always remains the same - helping the client realize their vision.

Over the years, the practice has carved out a reputation for providing quality design solutions with an immaculate eye for detail. It has made Arvind Varuna Associates one of the leading interior design firms in Chennai and through this, they have built a healthy client base who are satisfied by the services rendered to them, thus becoming their goodwill ambassadors.

the principals

Arvind Rangan



Arvind graduated in the year 1989 from IIT Kharagpur. After stints in Kuwait and in Chennai, he decided to launch his own architectural practice in Chennai.

The experience of working on large scale projects in Kuwait, gave him an international exposure. Working at a professional firm in Chennai, he honed his principles of design, drawing inspiration from the local context of climate, materials and traditions.

He visits architectural institutions regularly for guest lectures, conducts thesis studios and can often be seen judging design competitions across the country.

Varuna Arvind



Varuna completed her bachelor's degree in Fine Arts before completing her diploma in interior design. She launched her career with a leading firm in the city of Chennai and has been constantly refining her eye for design ever since.

Along with Arvind, she co-founded AVA.

Presently recognized as one of the leading and sought-after interior designers in Chennai, she has earned an unparalleled reputation for delivering projects that are unique in their style and aesthetics. Keeping up to date with all the latest trends in the design, fashion, and furniture world makes her work at par with global standards.



architecture

At AVA, the architects and designers bring to life the dreams and visions of every client who walks through its doors. Their success lies in their ability to bring character to the final design, while also reflecting the personality of the individual or the institution for whom it is created.

The firm applies a comprehensive approach to any project and takes clients through the process of design conceptualization, design development, detailed drawings, engineering services coordination and an active involvement throughout the execution phase.

The firm's architectural services include, but are not limited to:

- Private residences
- Group and multi storied Housing
- Commercial buildings
- Retail architecture
- Residential and day schools
- Hotels and hospitality
- Industrial architecture



interior design

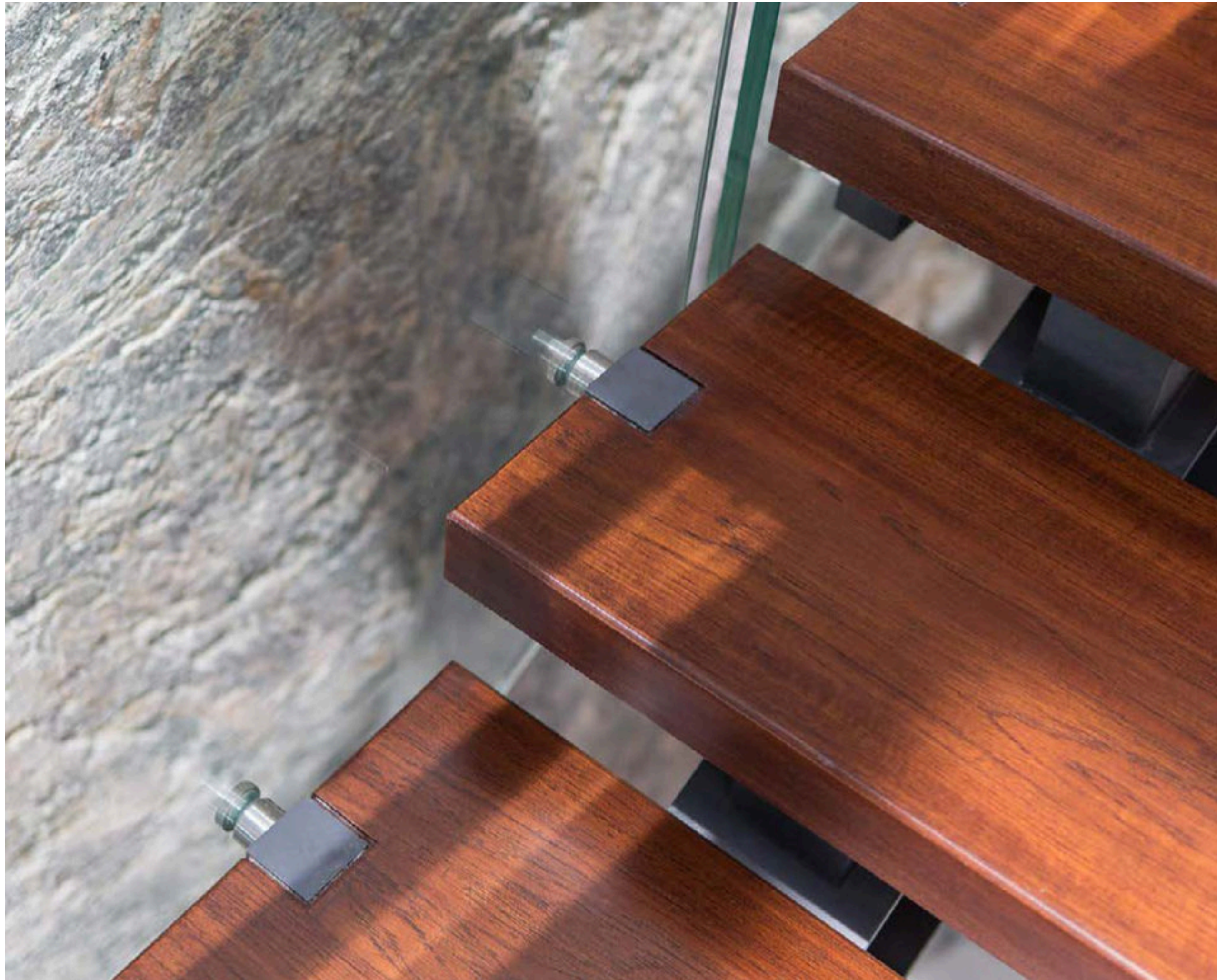
Interior design reflects an individual's taste and personality, or the values that an institution stands for.

At AVA, the designers go above and beyond, focusing on every aspect for specific design solutions that cater to the client's functional and aesthetic needs. Right from careful planning of spaces, to the colours, furnishing, materials and lighting, our team of designers strive to attain aesthetically pleasing and timeless interiors that reflect our clients' stories, styles and identities.

At AVA, there is an elaborate process that our designers follow. From meticulously detailing the various spaces, through design and execution, they work to bring out their best, delivering complete satisfaction to the client.

The firm's interior design services cover but are not restricted to:

- Bespoke Villas and Residences
- Offices
- Retail
- Educational architecture
- Hospitality



engineering services

The process of design, both architecture and interiors, is always incomplete without the support system of engineering services. What goes on behind the scenes forms the backbone of any project.

At AVA, this aspect is taken very seriously. From conception to construction, engineering solutions are offered to guide the client through the entirety of the process.

With interaction and involvement of these professionals from the onset of every project, we're able to deliver efficient, optimal and accessible solutions to each of our clients.

curation and styling

The firm also offers specialized services in the curation of existing spaces. This ranges from selecting and sourcing bespoke furniture, antiques, art, accessories, curios, furnishings and the like, to full-scale interior design services.

The exclusive display centre "VA GALLERY", showcases our principals' collectibles from their travels. Featuring exhibits personally handpicked, this is AVA's attempt to showcase and promote local talent of artists and craftsmen. This gallery serves to patronize such craftsmen, ultimately giving them a platform to fulfill their potential.

The Gallery can be reached at the following Instagram link: [varunaarvindgallery](https://www.instagram.com/varunaarvindgallery)





furniture

Under the brand name "VA GALLERY," our furniture division follows a Mantra of simplicity and affordability. Our range of products includes tables, seating solutions, beds, desks, storage, racks and just about any other piece of furniture you could imagine.

Our furniture is perfect for

- Residences
- Offices
- Retail Spaces
- Hospitality

Get a glimpse into our catalogue on [Instagram](#)

IT campus



This mini campus consists of two software development blocks 6 stories high, a cafeteria block for 800 persons with a wellness centre, a training centre cum 500-seater auditorium and a block of serviced residences for those using the training facility. A double basement car park caters to the parking needs.

Within the software blocks, the offices are carefully designed for every comfort and convenience for the 6,500 IT professionals working out of this facility. The typical floor plate is further divided into multiple development centres with the flexibility of scaling up the seats.

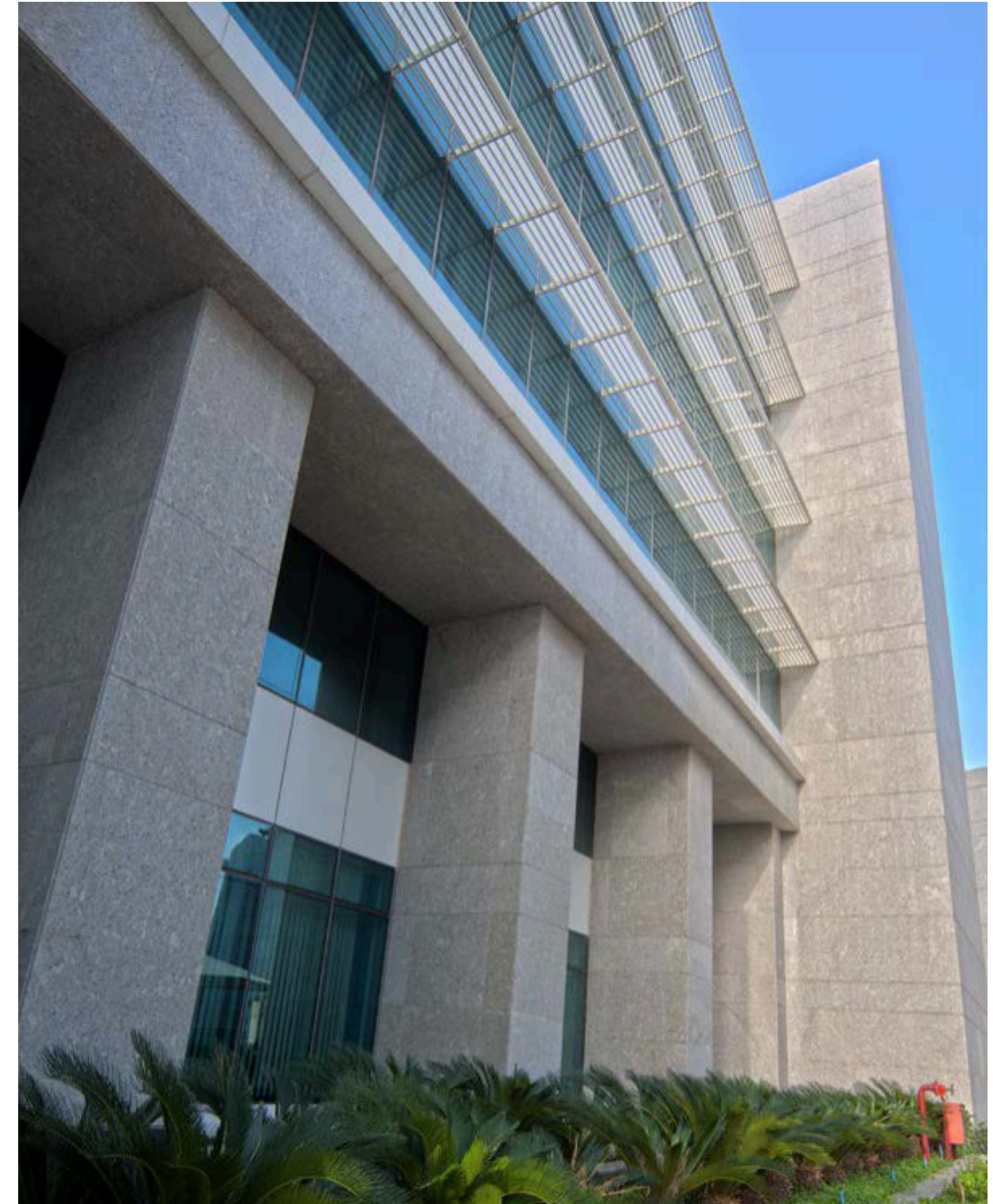
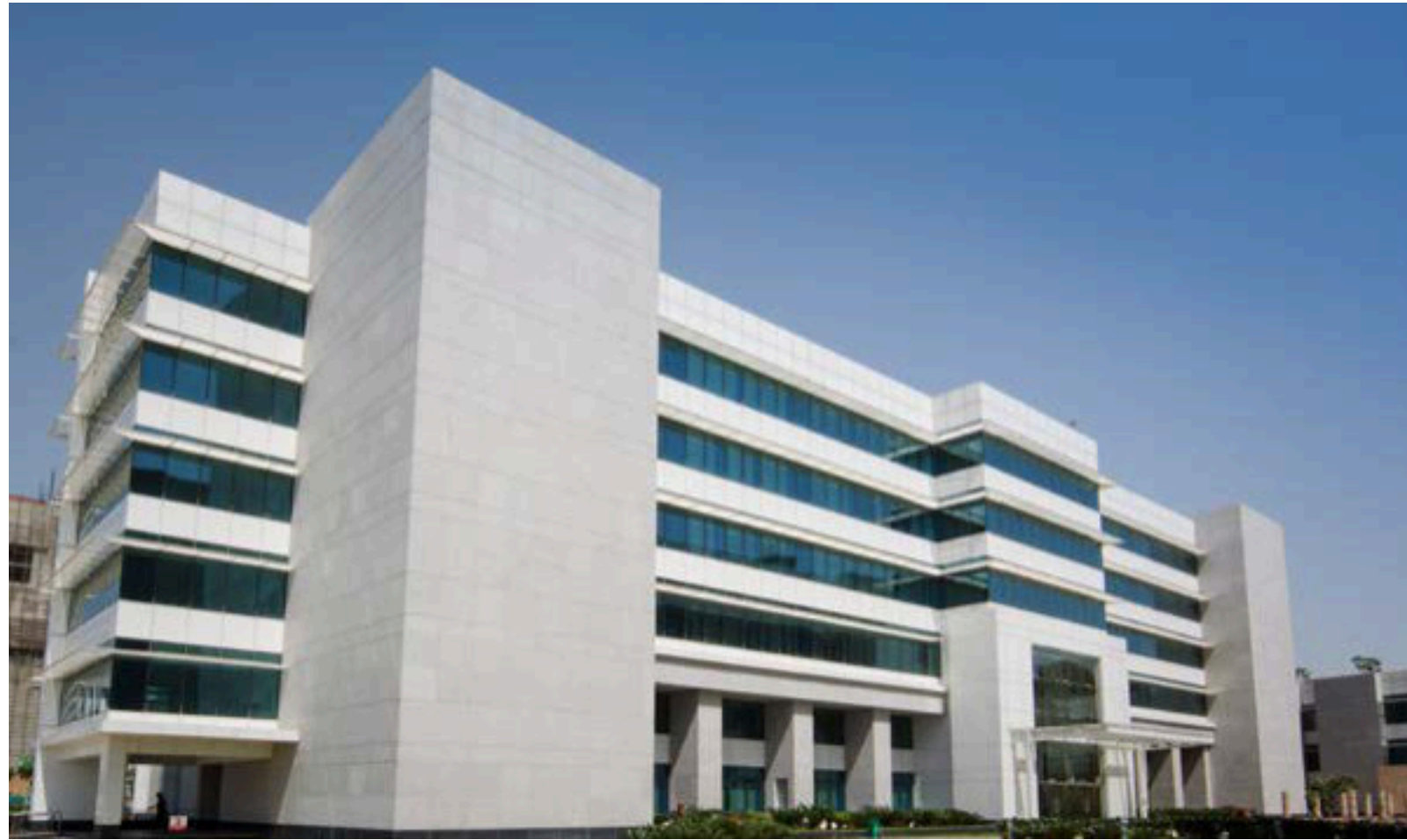
Common facilities like the servers, data centres, meeting rooms, conferences are aligned along the central corridor acting as the spine in every floor.

Be it the ergonomics, indoor air quality, harnessing of daylight, low VOC materials, water recycling etc., the utmost care was taken at every stage during design and execution.

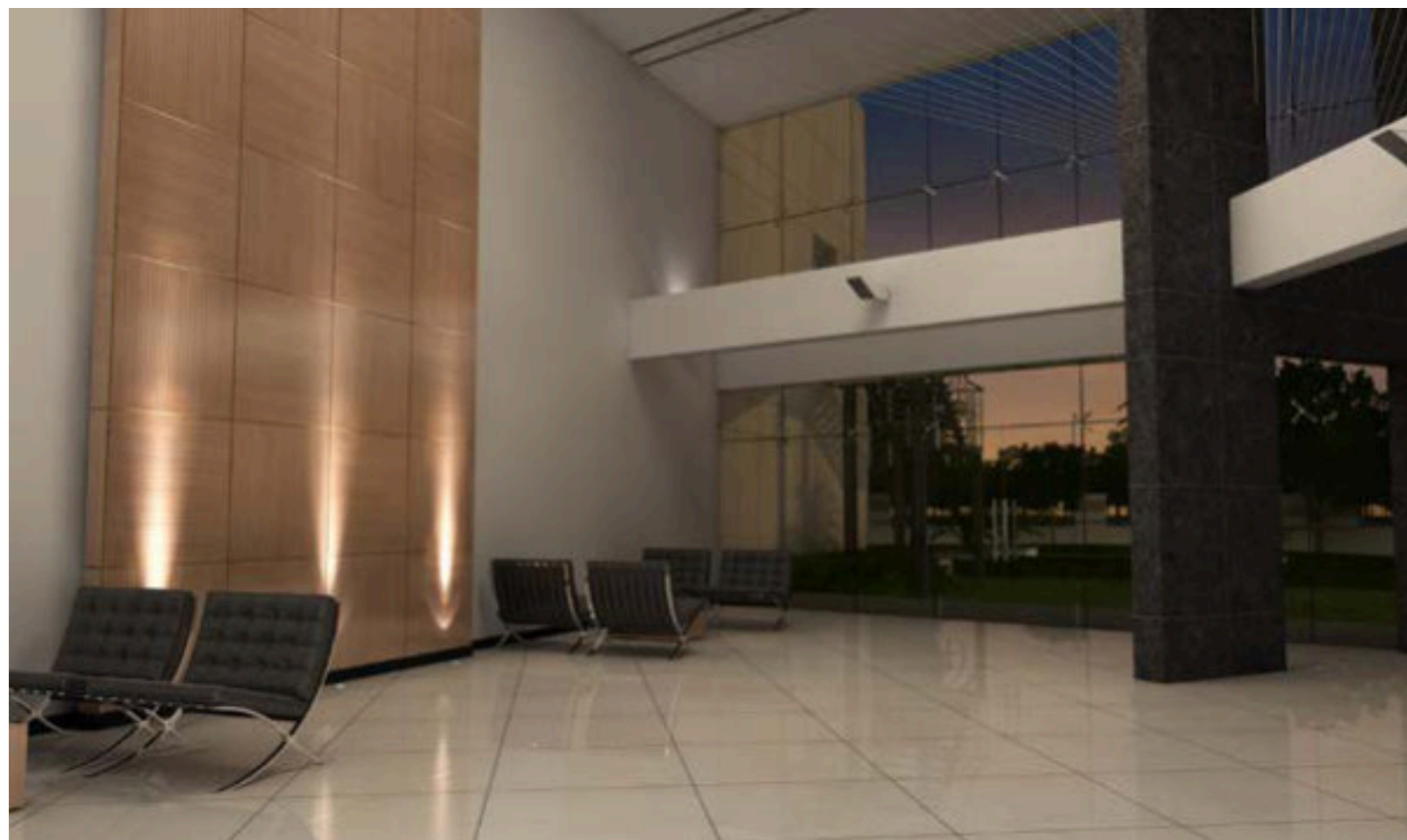
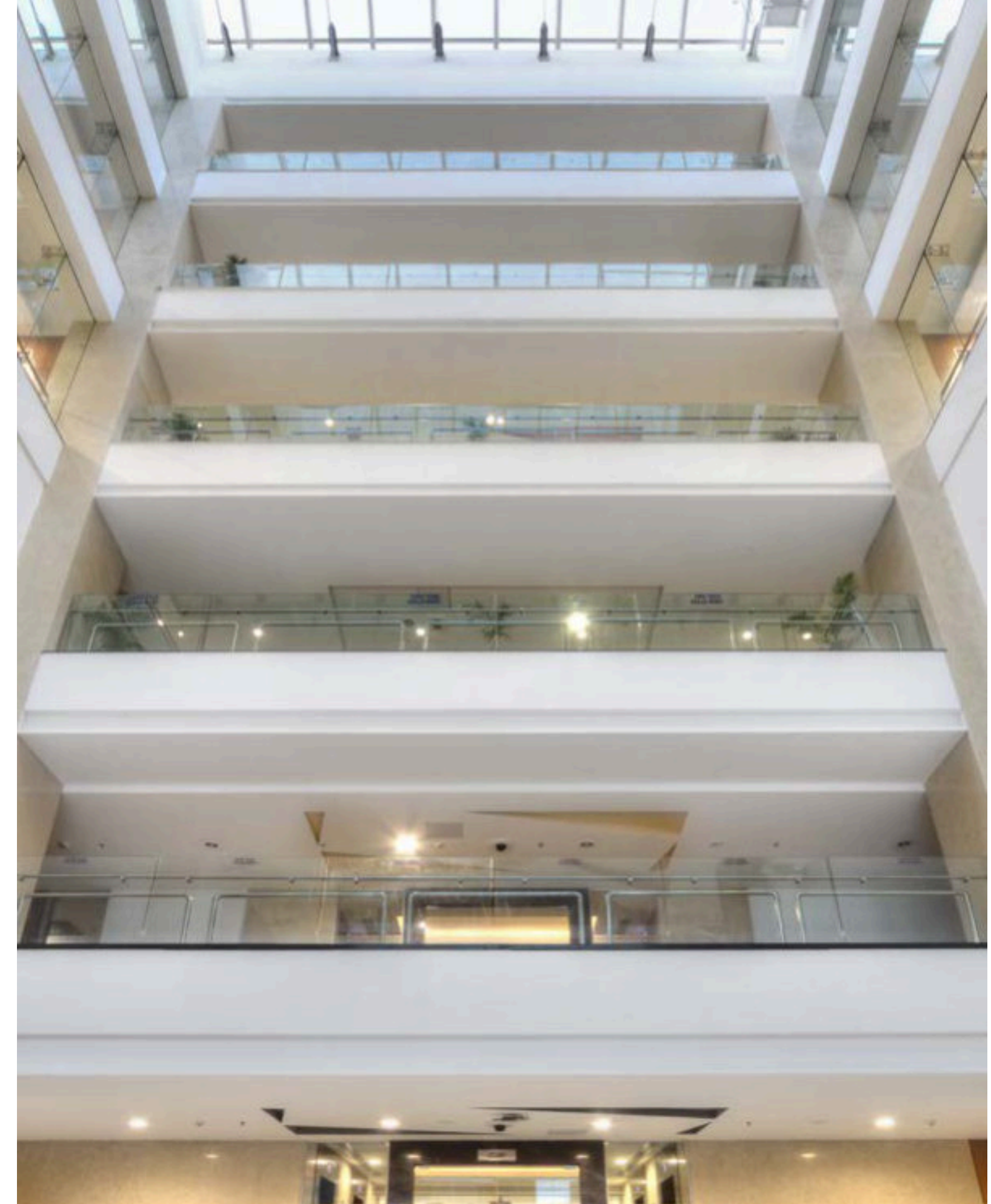
The campus obtained a Gold rating from IGBC.

client	hcl technologies ltd.
project	IT cum training campus
location	imt, manesar, haryana
site area	10 acres
built-up area	9 lakh sq. ft.
status	completed — 2013

IT campus



IT campus



office tower — pallavaram, chennai



The design envisages a multi-tenancy occupancy across this 10 storey building supported by three basements for parking. Vertical circulation is designed, keeping a large population of the workforce in mind, with 6 high-speed passenger elevators.

Fire staircases, service lift, toilets and the mechanical rooms all form part of the service core.

Floor to floor is 4,050 mm with PT flat slab design matching the industries best specifications. The western façade is well protected from the harsh sun, while the structural glazing uses high-performance glass on the other façades allowing ample daylight into the workspaces.

client	alliance group
project	office tower
location	chennai
site area	1.25 acres
built-up area	3.15 lakh sq. ft.
status	under construction

office tower — pallavaram, chennai



co-working spaces



Keeping in tune with the changing times, co-working spaces have become the next big thing. Working on these projects was an interesting learning curve, of trying to understand the needs of the office work environment that co-working spaces entailed.

Where the lines between work and home itself are blurring, our brief was to create spaces which break away from the stereotypical offices; where the mind is free and is enabled to be creative.

A bold palette of materials and colours in the design coupled with cutting edge technology is on offer at these facilities. These, in turn, lead to collaborative work patterns with higher motivation levels.

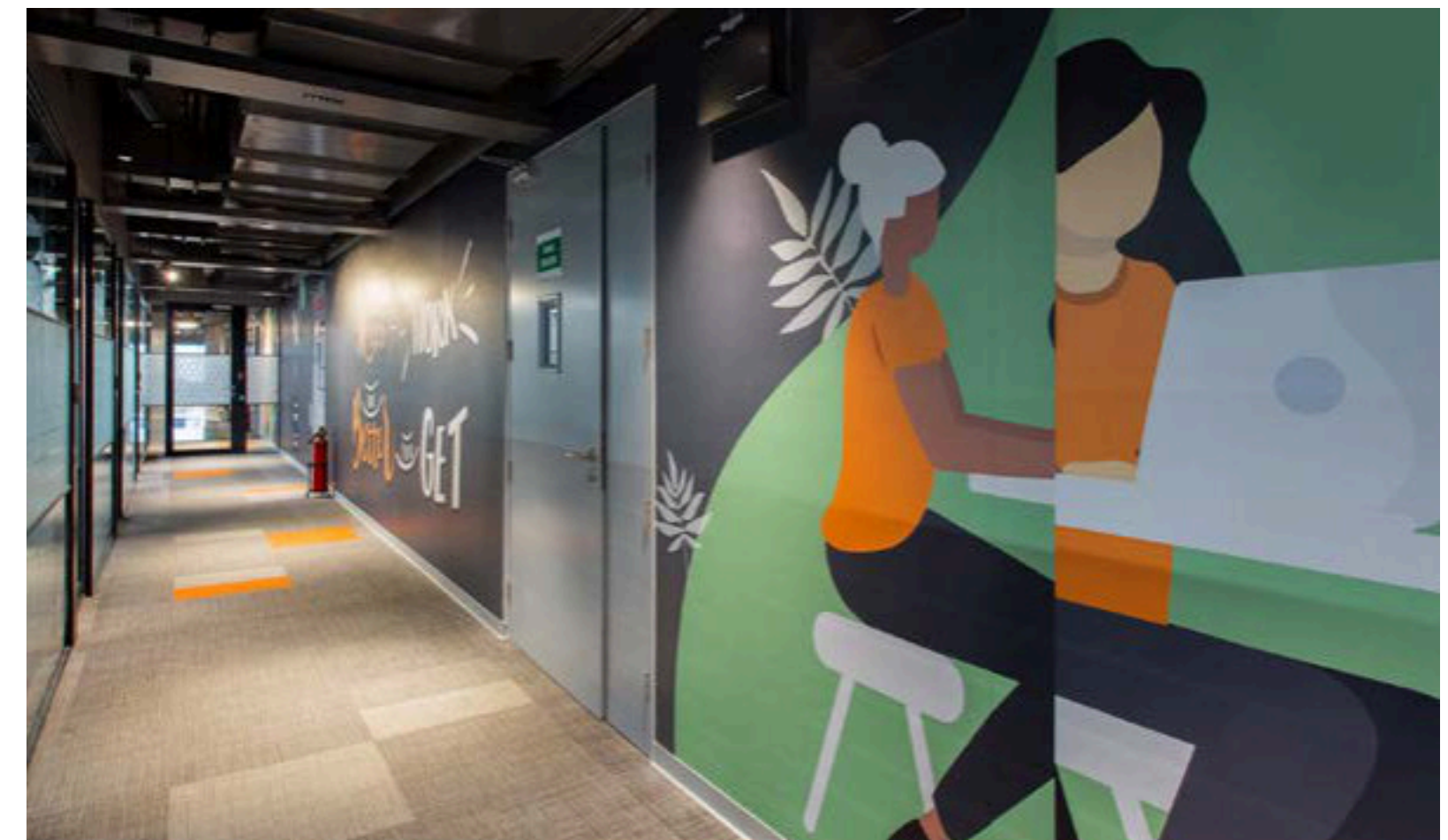
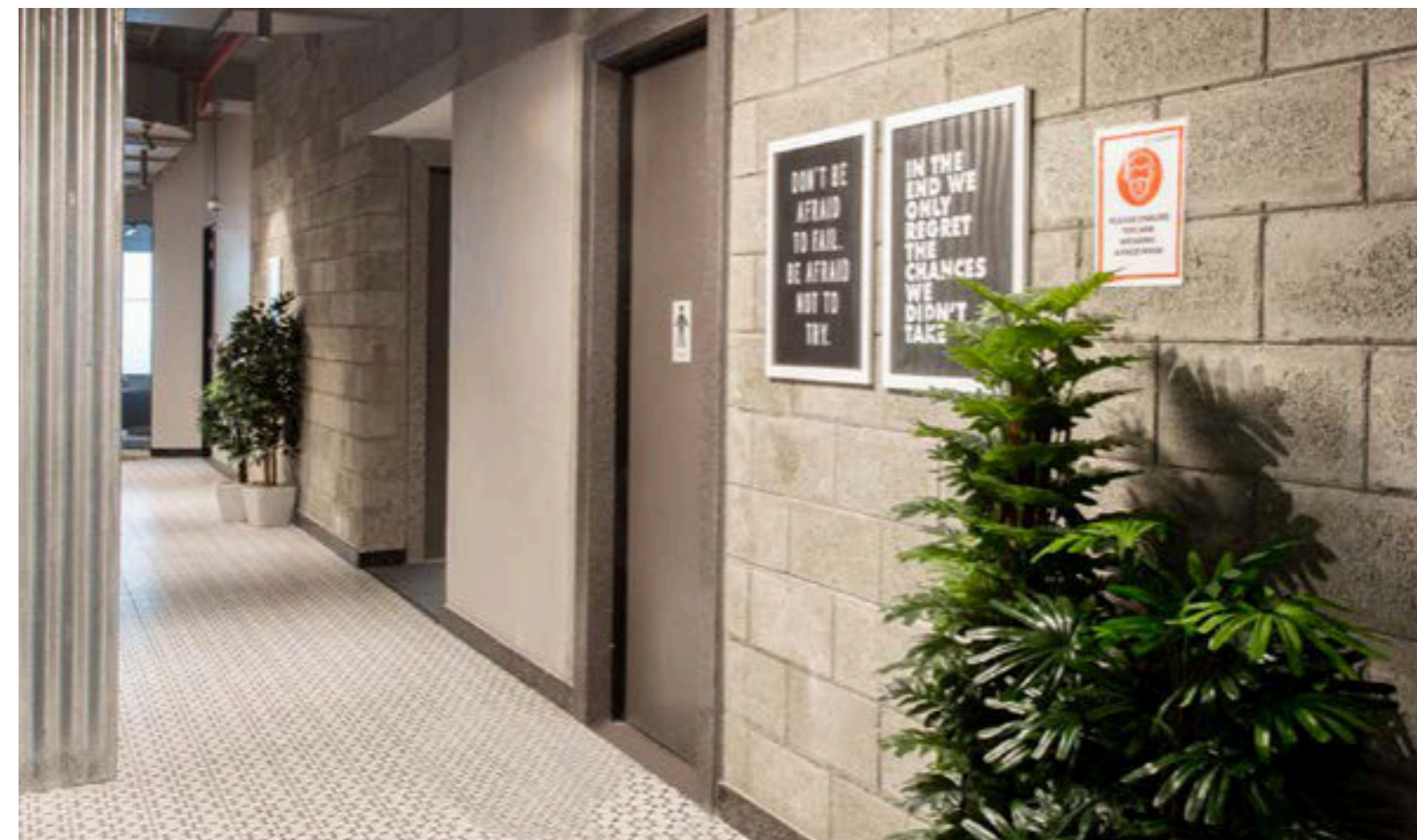
client co-working spaces

location chennai

built-up area 2.5 lakh sq. ft.

status completed — 2021

co-working spaces



co-working spaces



vidyagyan, a residential school



This greenfield project involved the master plan and architectural design for a co-ed boarding school for approximately 1,400 students between 6th and 12th standard. The site is situated on the National Highway connecting Lucknow and Delhi.

The design approach led us to organise the various functions into distinct academic, residential and activity zones. The athletic track with a full sized playfield inscribed within form a buffer from the busy highway. The entrance vista leads to the administration block. The three academic classroom blocks are laid in a cluster around a central court to foster interaction and collaboration.

The mess is placed between the boys' and girls' hostels and staff housing is at the periphery of the campus. Other structures include, the principal's residence, guest house, sports arenas, utility buildings etc.

A functional and aesthetically designed open air theatre completes the campus which has received acclaim within its few years of existence.

client	shiv nadar trust
project	residential school
location	sitapur dist., u.p.
site area	26 acres
built-up area	5.5 lakh sq. ft.
status	completed — 2015

vidyagyan, a residential school



vidyagyan, a residential school



vidyagyan, a residential school



international school



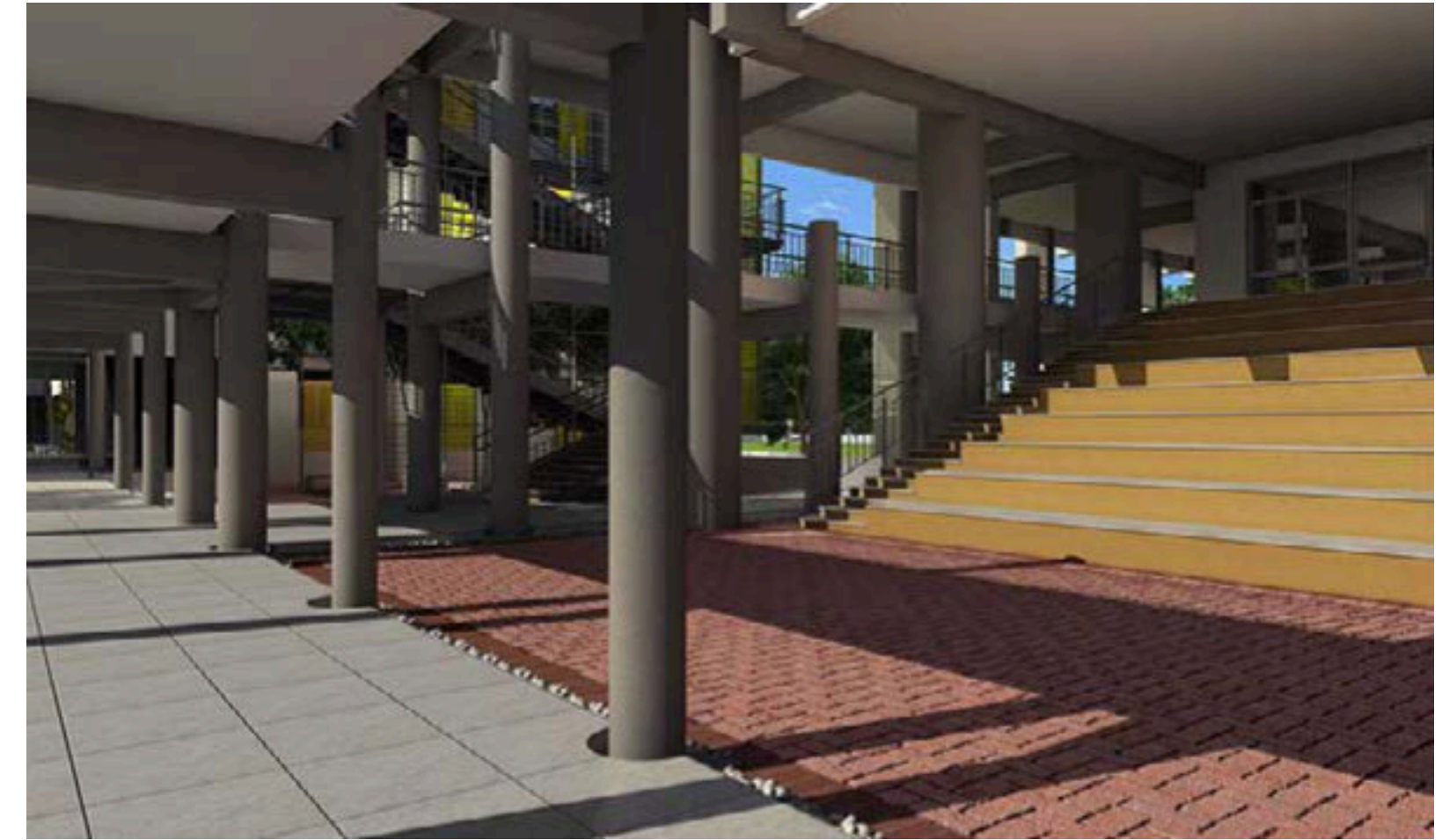
The design of this day school is envisaged as two separate administration and academic blocks. Besides the offices, the admin block houses the students cafeteria on the 1st floor and a large multi-purpose auditorium, on the 2nd floor. Above this, the terrace level is used for sport activities with nets and mesh fencing.

The academic block is designed around a series of inner courts bringing in ample daylight. Classrooms are offset from the abutting corridor by smaller light courts, thus acting as a sound buffer.

The success in any school design is seeing the children relish their premises post occupancy, which is evident here.

client	apl global school
project	chennai
site area	3.75 acres
built-up area	1.7 lakh sq. ft.
status	completed — 2017

international school



tropical home

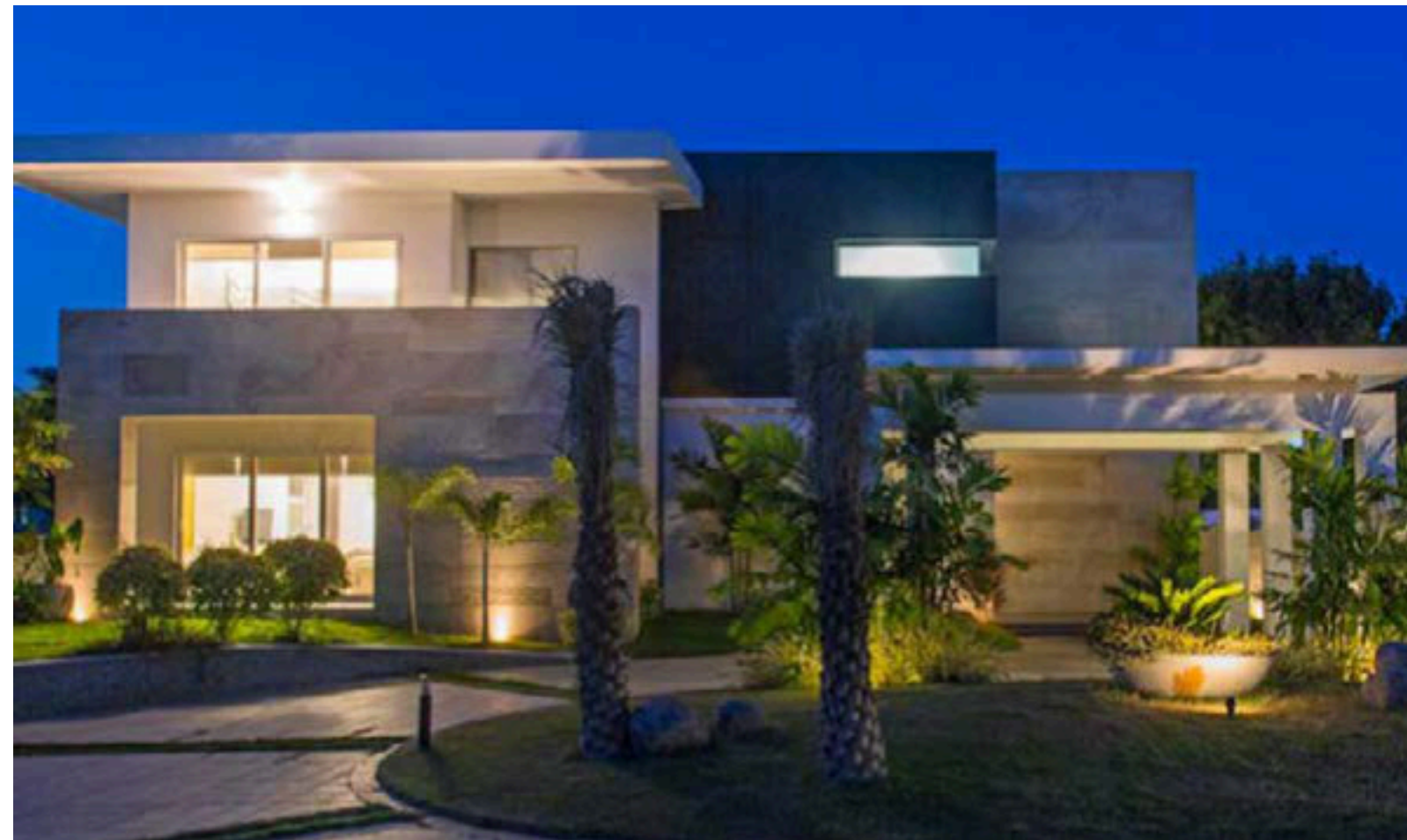
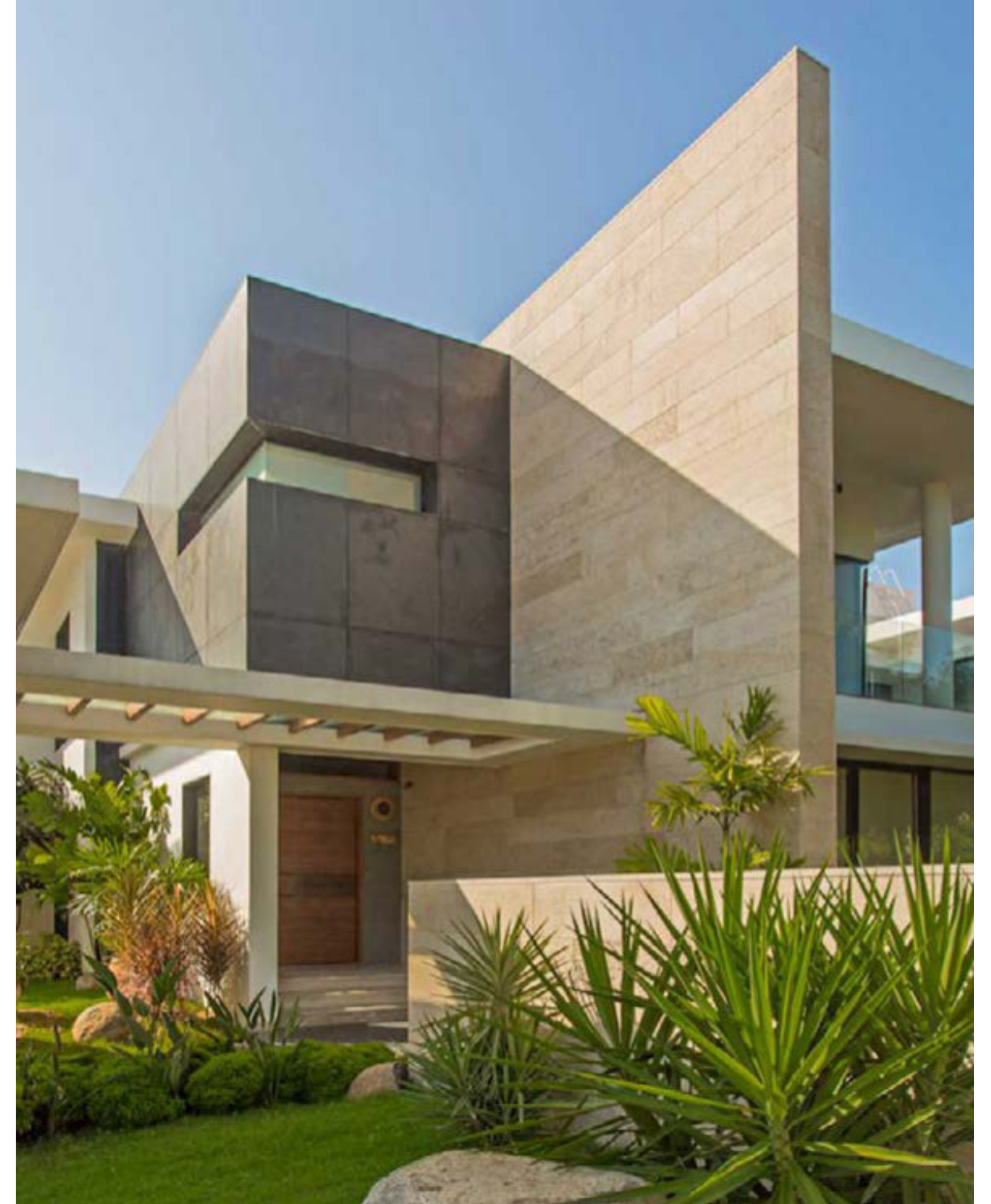


This tropical modern villa is a dream home for the clients for their personal use and to entertain guests. The forecourt with a central green island is designed to park several cars. This space is segregated from the main lawns by a granite-clad feature giving it maximum privacy. The living, dining and entertainment den all overlook the garden on the east and open out to a silent pool or the deck which are placed on the east and north sides respectively. A large private swimming pool occupies the rear part of the site.

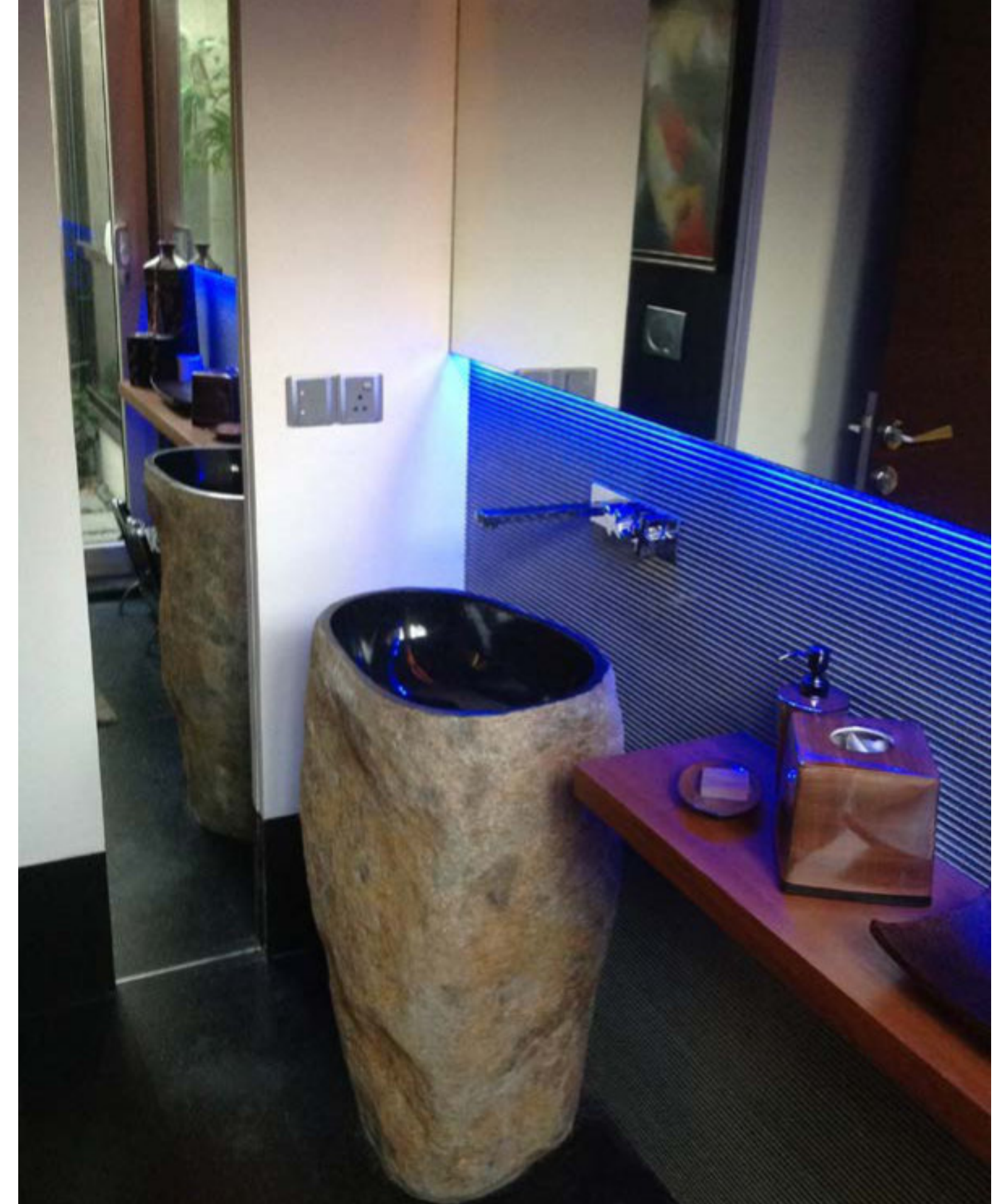
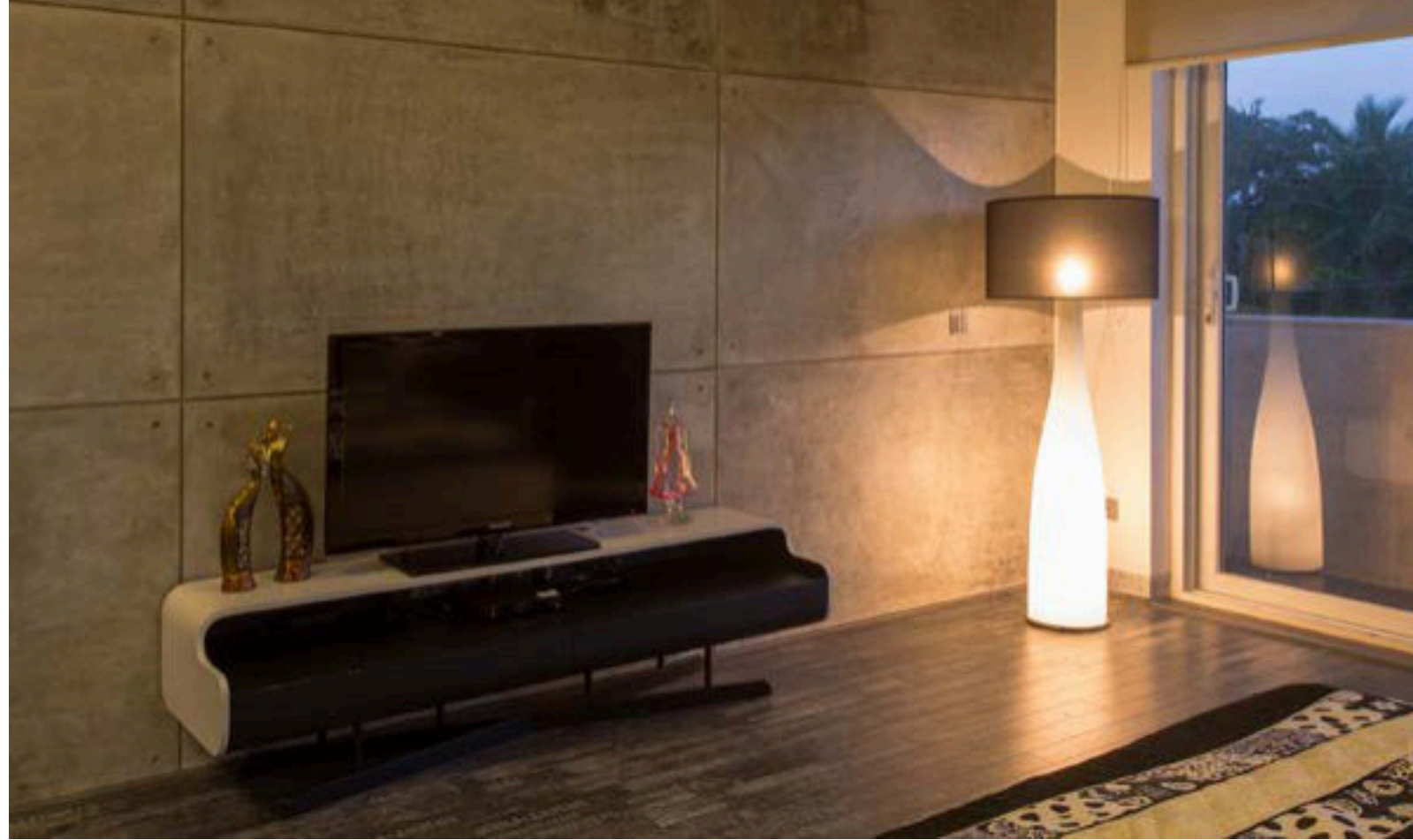
The design successfully blocks out the harsh west sun and provides for deep shading of the fenestration on the east and south facades. The interiors are a successful blend of muted opulence and a contemporary rusticism. Polished Italian marble floors and exquisite leather furniture comfortably co-exist with hand-finished concrete surfaces and the usage of rough natural stone in this unique masterpiece.

client	private individual
project	tropical beach house
location	ecr, chennai
site area	12 grounds
built-up area	12,000 sq. ft.
status	completed — 2011

tropical home



tropical home



villa in an urban context



The project entailed the complete interior design of a residence for a private family. Designed with plenty of style and elegance, this outcome is a result of very effective collaboration between the client and designers, making the process a satisfying exercise. Plenty of contrasts in materials with some bohemian colours compliment each other in this project.

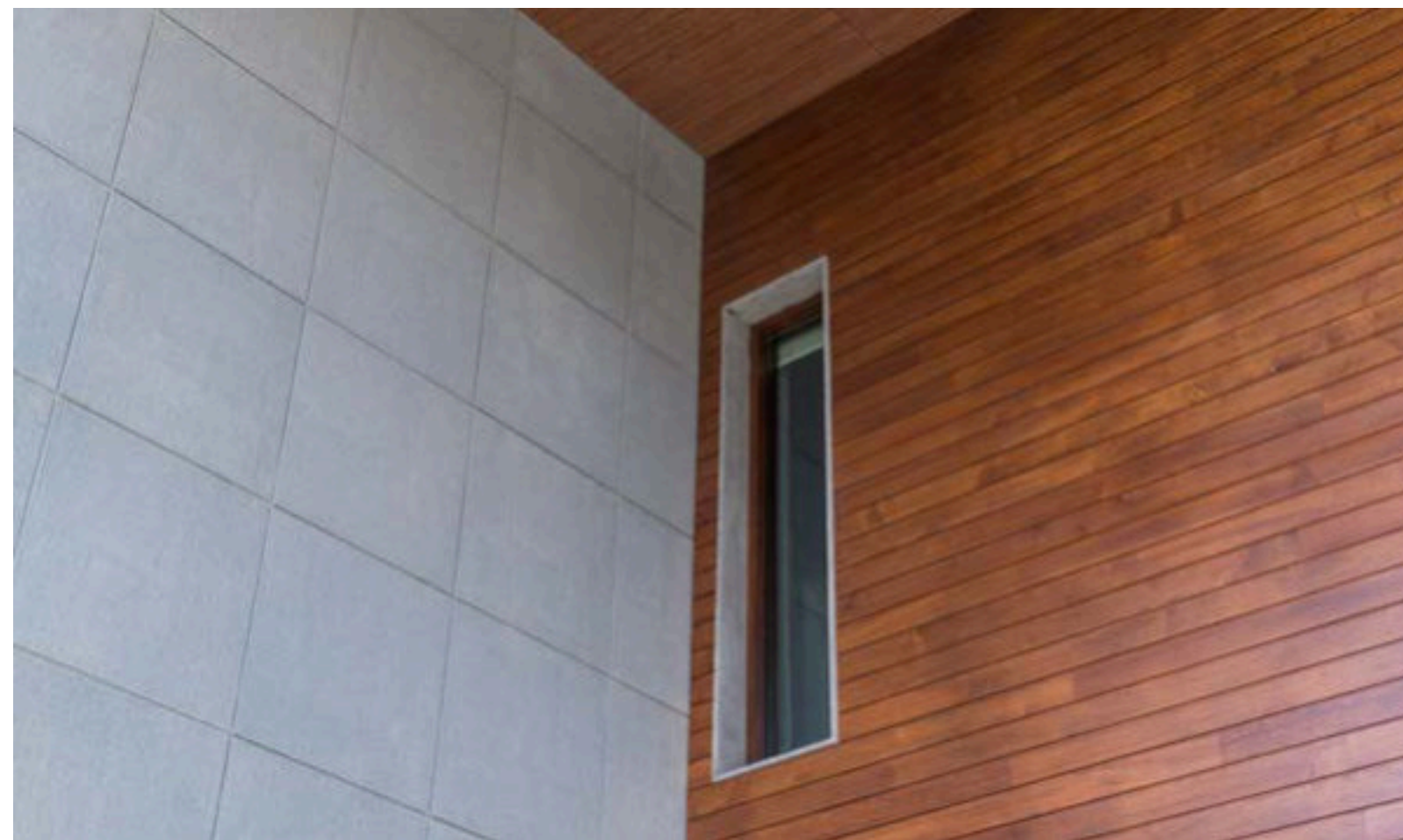
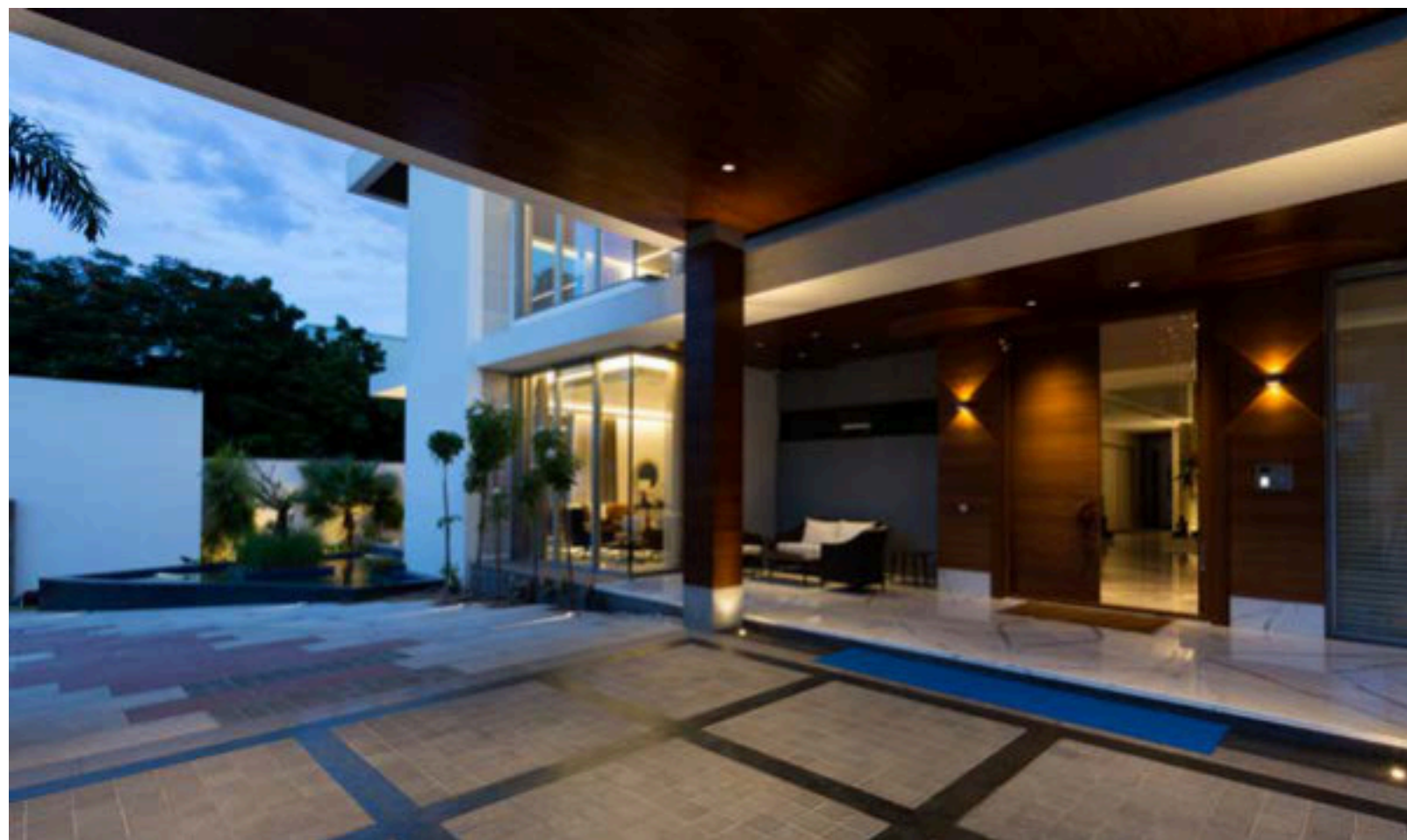
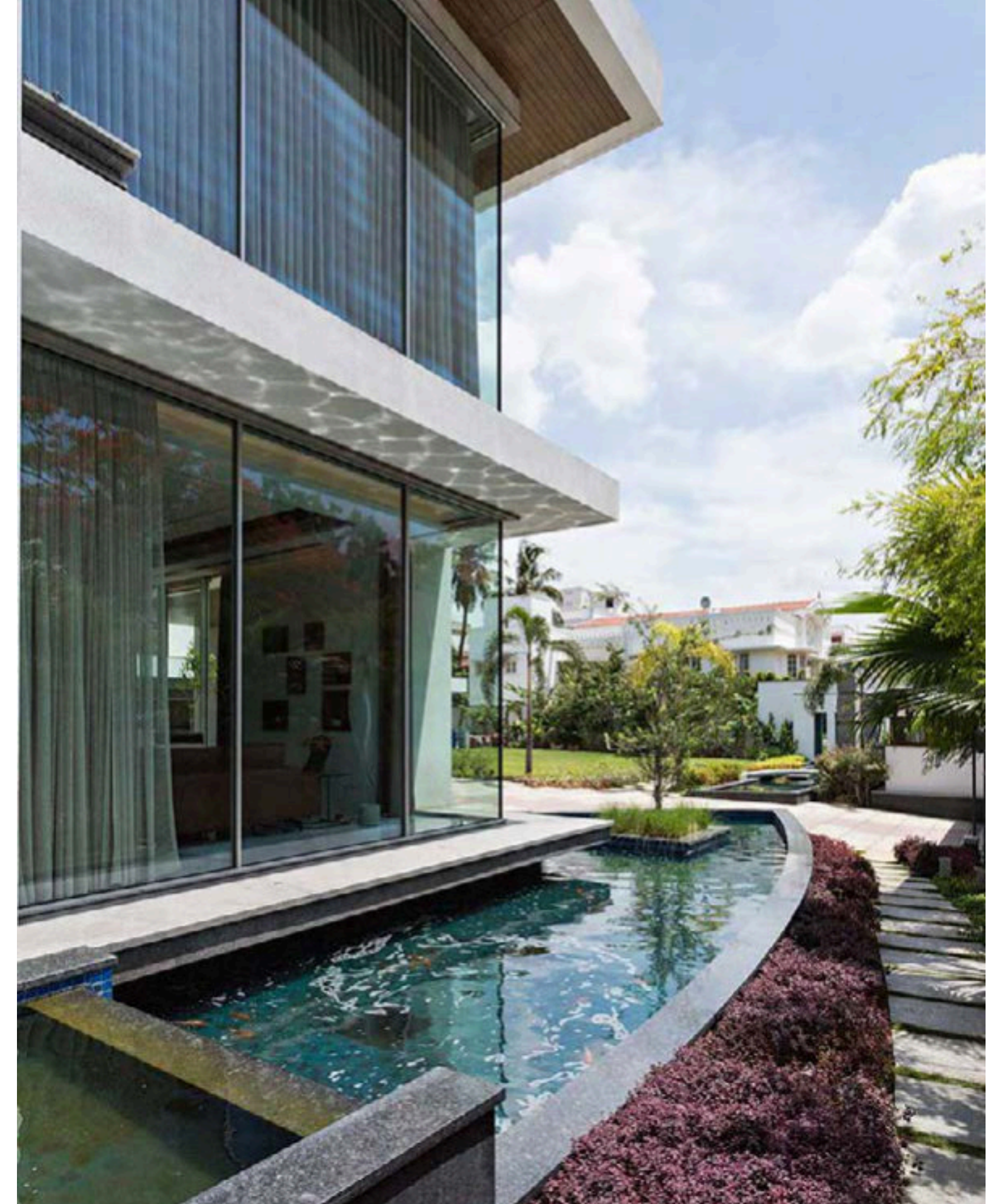
client private individual

location chennai

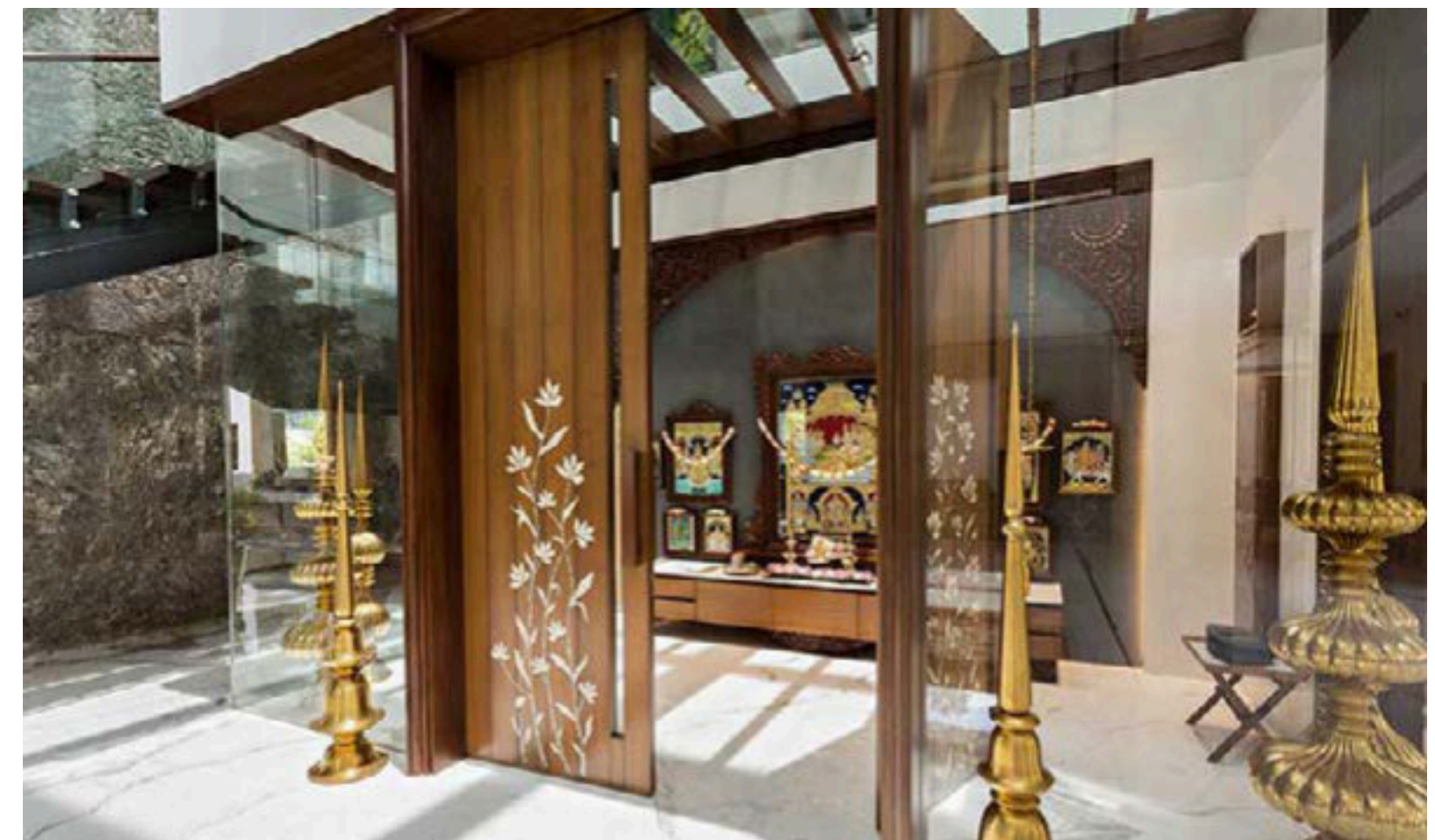
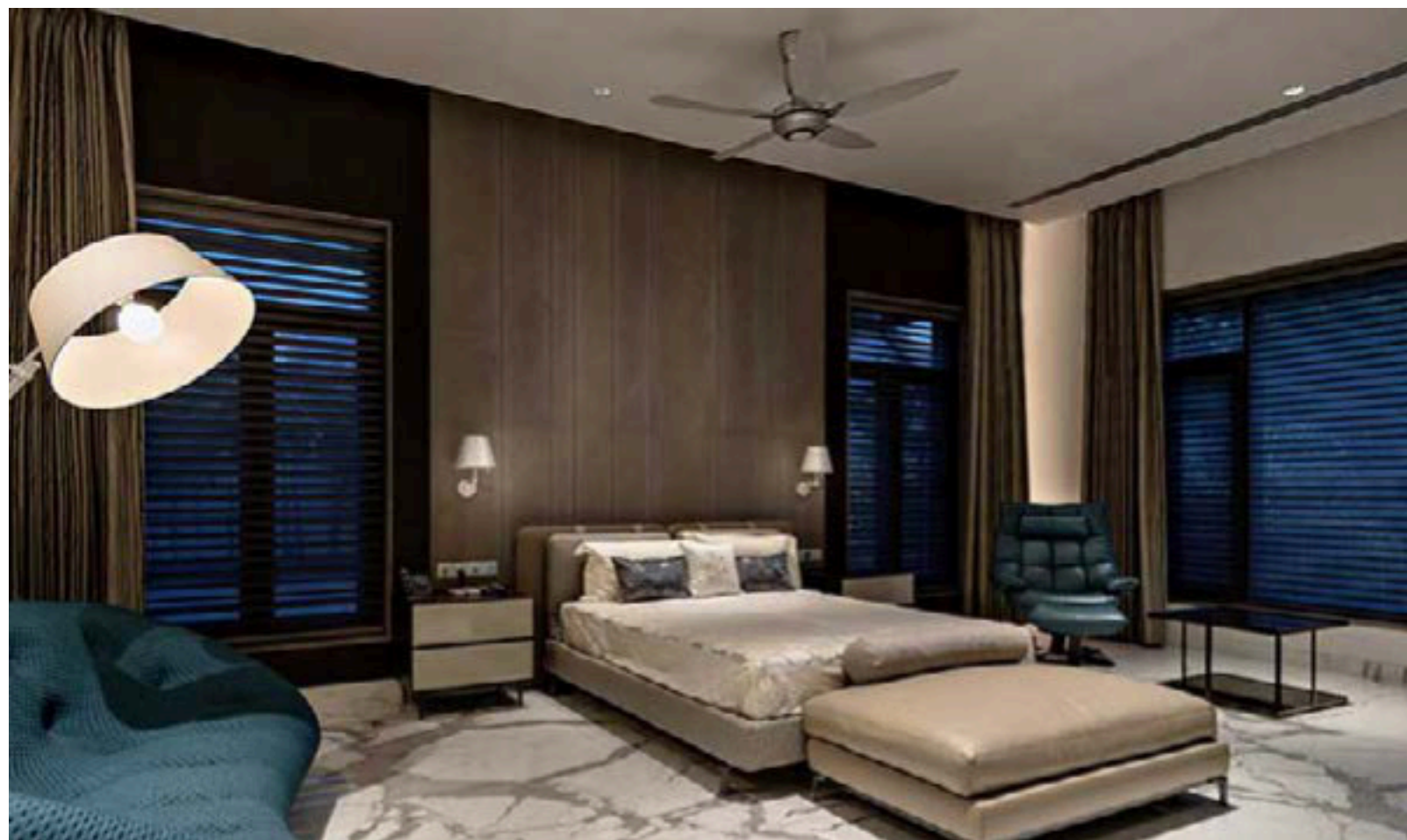
built-up area 7,500 sq. ft.

status completed — 2018

villa in an urban context



villa in an urban context



weekend getaway



This simple yet elegant beach home is designed for getaways with friends and family. It has a living space with a kitchenette and one ensuite bedroom on the ground floor, with the master suite on the first floor. An indoor open-air Jacuzzi is the centre of attraction and is open for all to use.

A taste for the purity of materials and a need for minimal maintenance led to the idea of having fair finished concrete on the ceiling and hand finished and polished concrete on the floor and many of the wall surfaces. Pigments are added for that touch of colour.

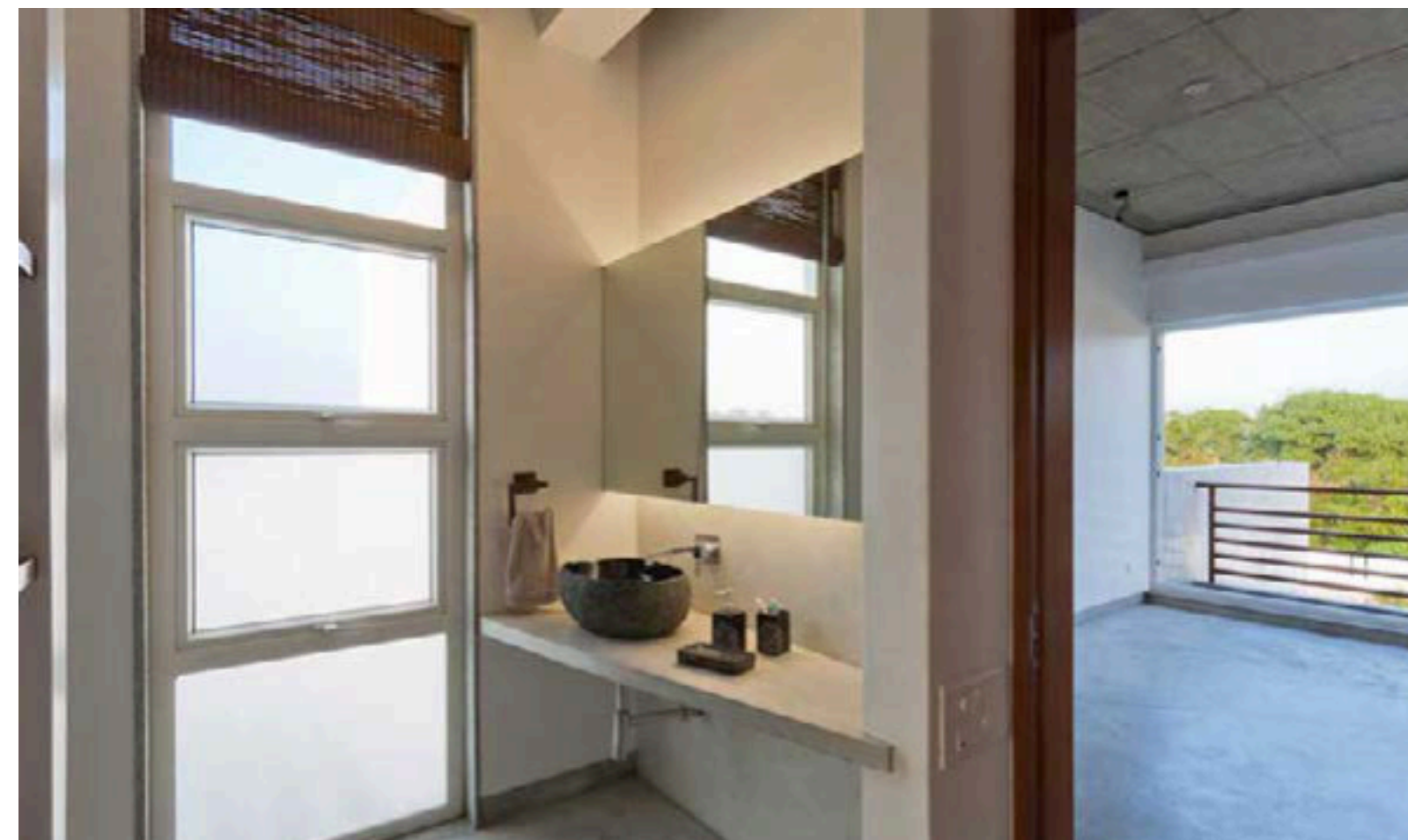
The detailing is minimal which gives the whole space an understated elegance. Whites and greys dominate the palette allowing the house to blend with the surrounding elements of nature.

client	private individual
project	beach house
location	ecr, chennai
site area	14,400 sq. ft.
built-up area	3,00 sq. ft.
status	completed — 2010

weekend getaway



weekend getaway



private villa



The project entailed the complete interior design of a residence for a private family. Designed with plenty of style and elegance, this outcome is a result of very effective collaboration between the client and designers, making the process a satisfying exercise. Plenty of contrasts in materials with some bohemian colours compliment each other in this project.

client private individual

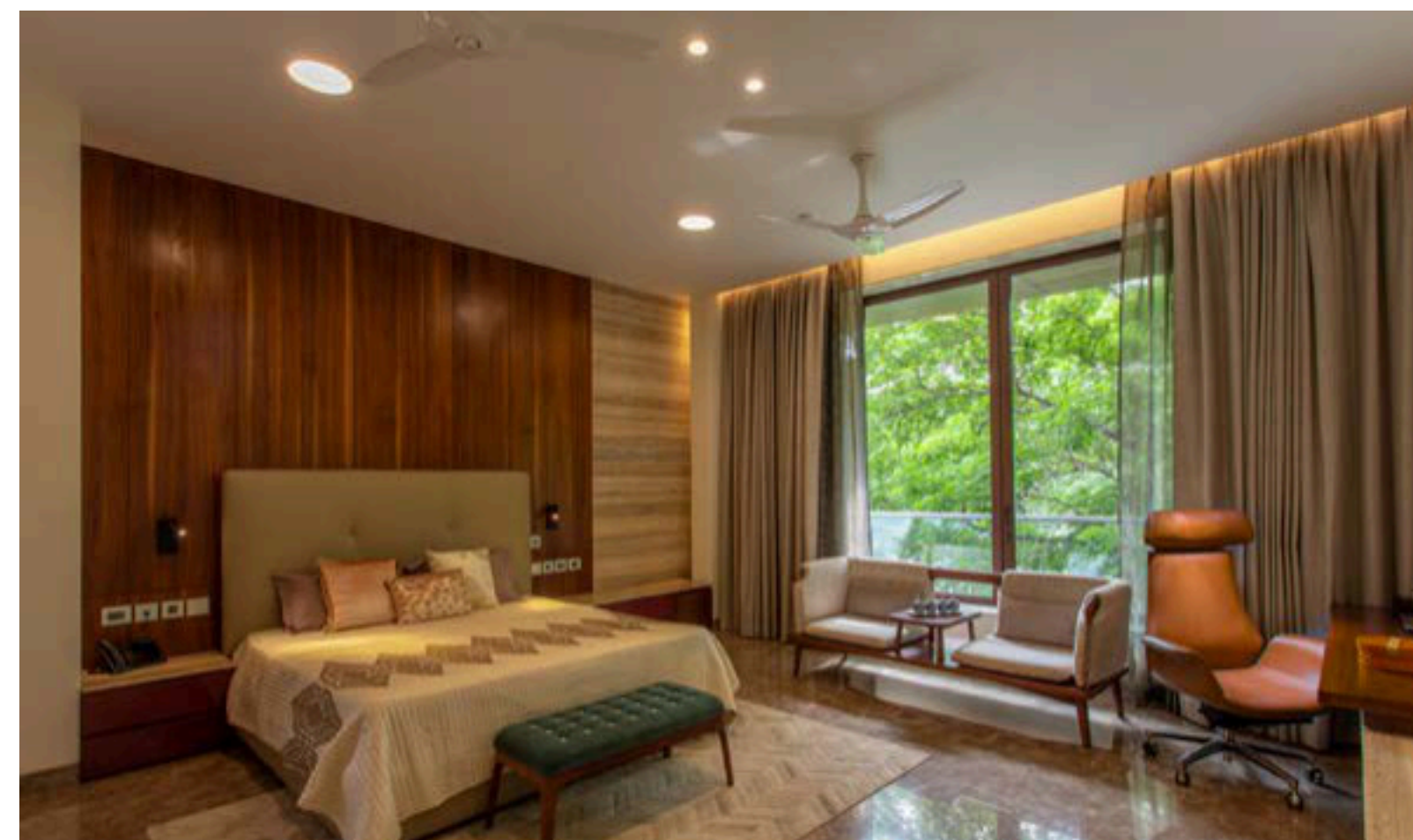
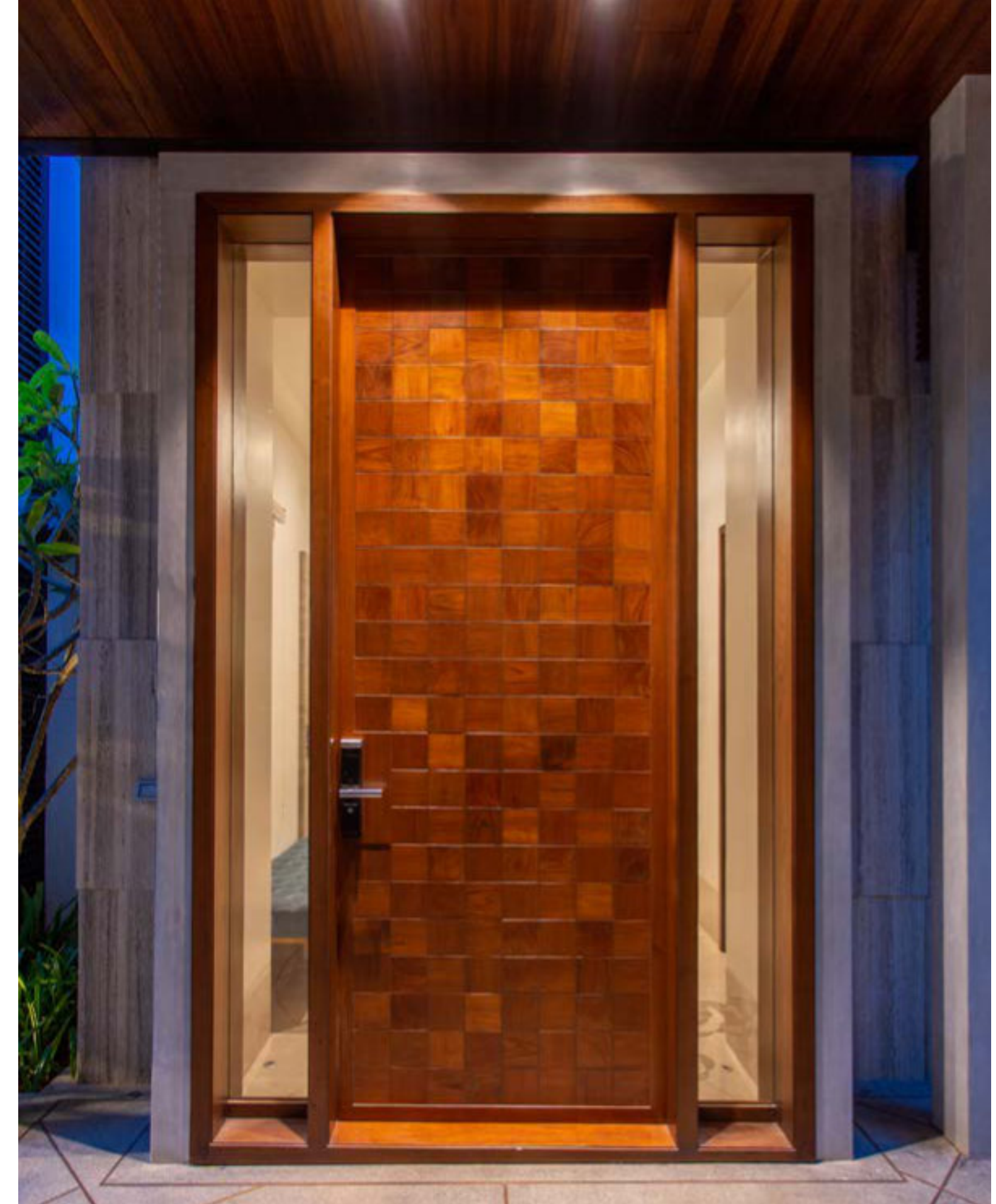
project private residence interior

location chennai

built-up area 7,500 sq. ft.

status completed — 2018

private villa



private villa



pushkar II, apartment tower



This project is a stand-alone residential tower with apartment sizes ranging from 1,000 sq. ft. to 1,600 sq. ft. The plan is east facing and in U-shape with a podium level swimming pool tucked in at the first-floor level. The inward-looking plan offers excellent views of the pool below and the Bay of Bengal beyond.

One of the wings across all floors is designed for an assisted living community for senior citizens. This wing has its own vertical core with added security features and amenities like a cafeteria, medical room, travel and help desks.

The whole experience here has a community feel to it. Parking levels at the stilt and basement.

client m/s. ramaniyam real estates pvt. ltd.

project apartment tower

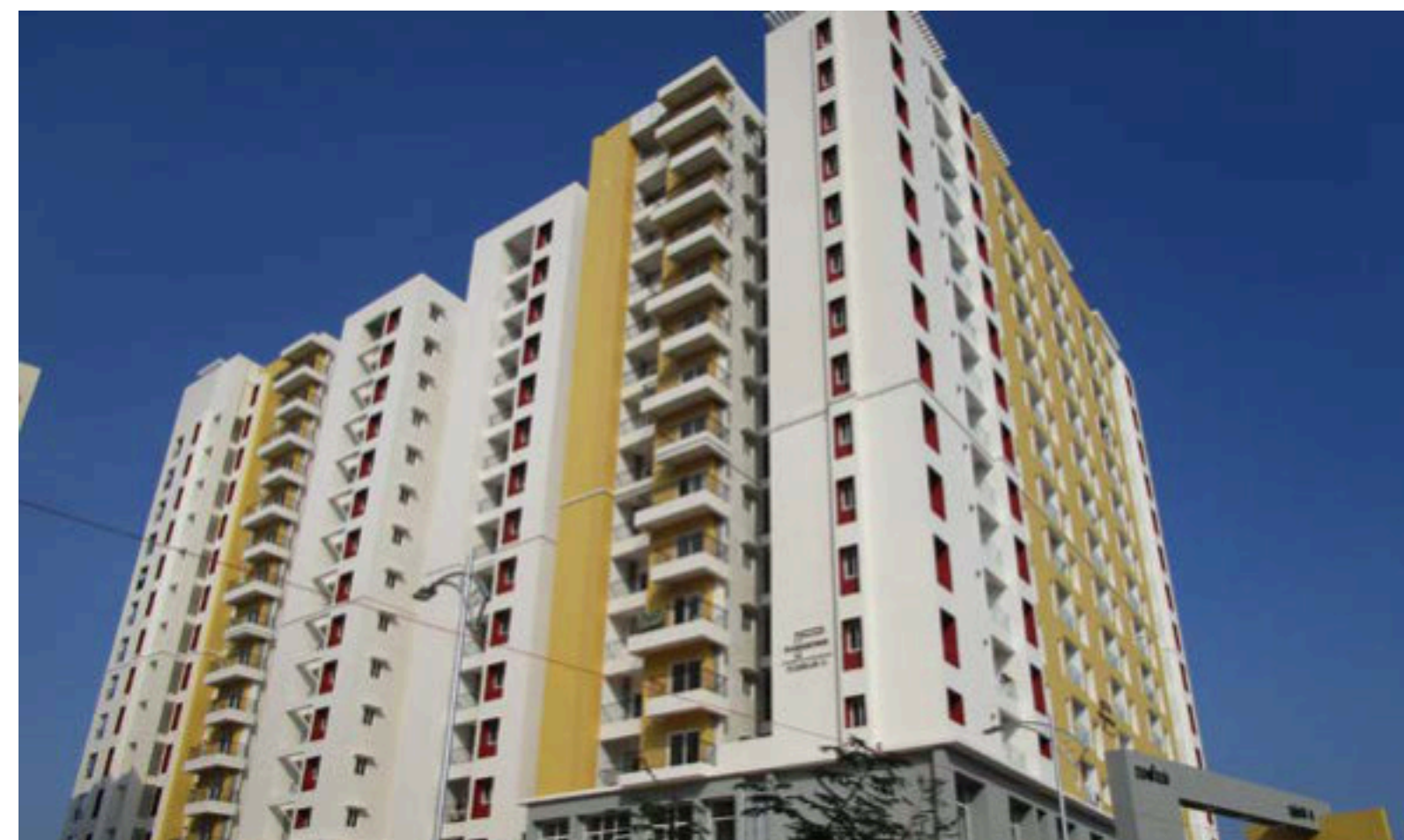
location chennai

site area 2.15 acres

built-up area 3.5 lakh sq. ft.

status completed — 2015

pushkar II, apartment tower



ciclo, a cycle cafe



Being among the foremost cycle cafes to open in India, designing this new kind of space for a generation of cycle enthusiasts was an interesting challenge.

Three locations were planned with the flagship café-cum-store in Chennai. It is a unique blend of cycle-themed retail, service and café.

The design approach involved the use of cycles as a theme. Therefore, its various components were weaved into the design of the furniture and accessories, for which purpose, a cycle was fully dismantled for design inspiration. This led to some very interesting design solutions which have now become a signature in this segment. Being situated in Metros and catering to cosmopolitan patrons made it easier to accept and enjoy.

The overall ambience therein with rustic overtones all gel very well with the raw components of a cycle, giving it a hip and happening feel.

client absolute grey suites

project ciclo, cycle cafe interior

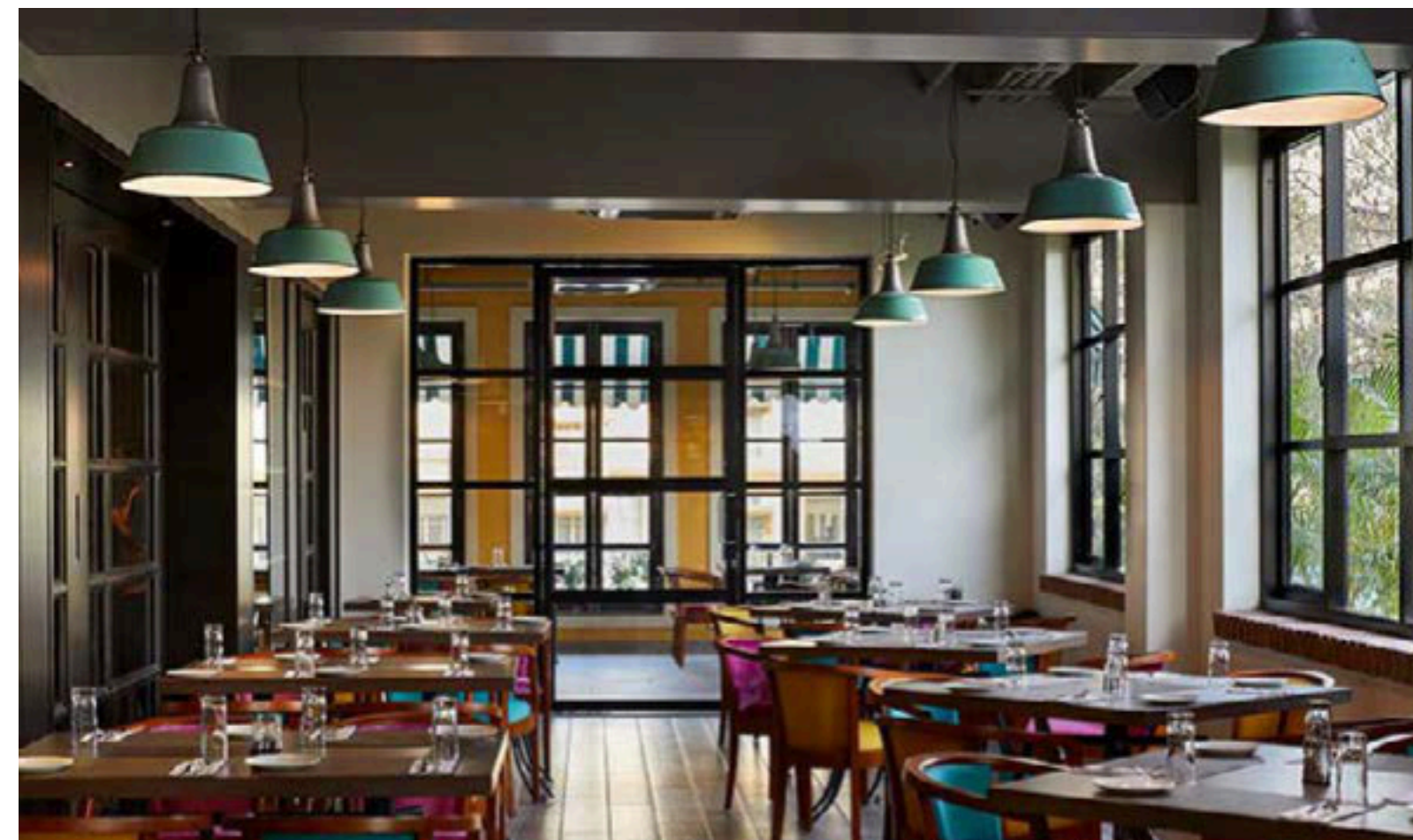
locations chennai, bangalore & hyderabad

site area area

built-up area area

status completed — 2017/2018

ciclo, a cycle cafe



business hotel — london



The concept for their hotel properties was finalized as New Modern by the IHG group. Within this ambit, we tried to bring out the local flavour of Kingston upon Thames so as to connect with the local crowd and the business traveller alike.

We used a warm material palette combined with sophisticated textures that liven up the space. The plan at the ground floor lobby level is porous and open, allowing an organic flow making everyone feel comfortable.

The bar has an electric and buzzing ambience in an attempt to draw people in from the lobby and the street. The restaurant seamlessly extends from the bar.

client sun hotels group/crowne plaza, london

project hotel interior

location kingston upon thames, surrey, united kingdom

areas covered 100 keys cum public spaces

status completed — 2019

business hotel — london



come, have a chat with us.



address

"Sharada Krupa"
#149, Chamiers Road,
R.A.Puram,
Chennai - 600028

[map](#)

phone

+91 9841 011 226

email

admin@arvindvaruna.in

social media

[instagram](#)

[facebook](#)